



Sensorama

- Comprehensive sensor solutions for diverse applications
- Modular product portfolio
- Customized solutions

**Smart
Sensing
Solutions**

The company



BBC Bircher Smart Access is a company of the private Swiss BBC Group

About BBC Bircher Smart Access

BBC Bircher Smart Access develops, produces and distributes intelligent sensor solutions for access systems. With people and vehicle flows growing around the world, ever greater demands are being placed on access points. BBC Bircher's solutions meet the increasing needs for safety, hygiene, accessibility and energy efficiency.

Not only are BBC Bircher's sensor solutions characterized by the company's comprehensive product portfolio and an international manufacturing network, but they also stand out from the crowd thanks to the dedication and teamwork of its approximately 180 employees and their extensive technological expertise.

For more than 60 years, BBC Bircher has been fulfilling the specific needs of its international clients with an extended distribution network spanning Europe, Asia and North America. BBC Bircher Smart Access has been a business unit of the BBC Group since 1991.

Further information can be found on our website: bircher.com

Sensor solutions

ExpertSystem

ExpertSystem XL

Modular pressure-sensitive edge system



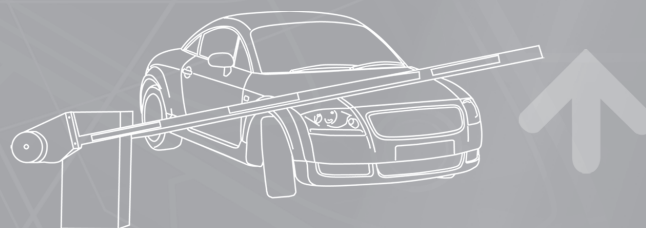
For gate applications



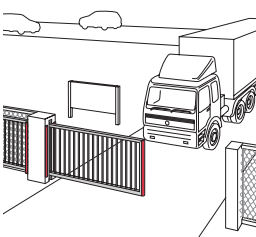
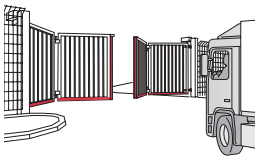
ExpertSystem XRF

Wireless signal transmission system



For applications with high requirements for performance and design



<p>Application</p> 		
<p>Example from the field</p> 		
<p>Product benefits</p>	<ul style="list-style-type: none"> • Heightened sensitivity and short response time • Fast assembly and easy installation • Attractive appearance 	<ul style="list-style-type: none"> • Short setup time • High interference immunity and long battery life • Safety level cat. 2, PLC or cat. 3, PLd available
<p>Supplementary products</p>	<p>Herkules 2E Helios 2T EasyLoop ProLoop</p>	<p>Herkules 2E Helios 2T EasyLoop ProLoop</p>
<p>Variants</p>	<p>Height x width in mm: 42×29, 49×36/42, 56×36/41, 74×37/43, 80×42, 99×44</p>	<p>1-channel, 2-channel, DIN housing, integrated transmitter, wicket door switch</p>



Detectors for industrial door and gates

Helios 2T

Microwave motion and AIR presence detector



For industrial doors

Herkules 2E

Microwave motion detector



For industrial doors

EasyLoop

Vehicle detection sensor



For barriers and gates

ProLoop2

Loop detector



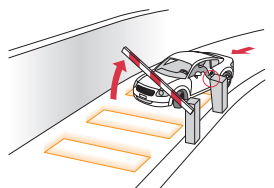
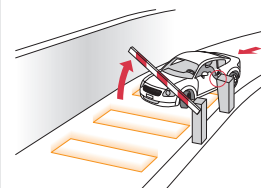
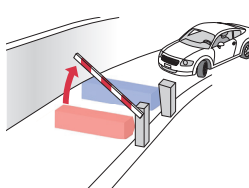
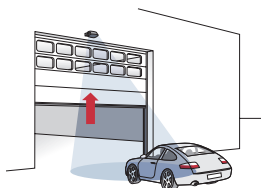
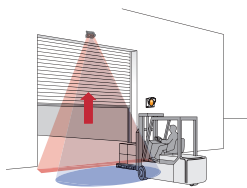
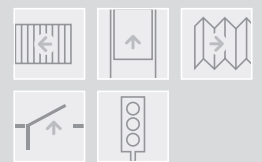
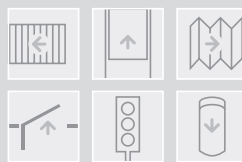
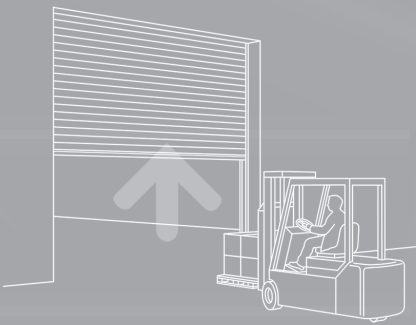
For reliable monitoring and evaluation of induction loops

ProLoop Lite

Loop detector



The compact standard version of ProLoop2



- Fast installation and easy parameter configuration
- Flexible adaptation of the detector fields
- Reduction of energy consumption

- Cross-traffic masking and direction recognition
- Person/vehicle distinction
- Pulse-on-exit functionality

- Quick and easy to install thanks to above ground mounting
- User-friendly configuration via mobile app

- Direction logic function
- Protection against power failure
- Increased sensitivity

- Increased sensitivity

ExpertSystem XL
ClickLine, StandardLine
ExpertSystem XRF
LBGate

ExpertSystem XL
ClickLine, StandardLine
ExpertSystem XRF
LBGate

ExpertSystem XL
S-Line

Pre-assembled loops
Herkules 2E
Helios 2T

Pre-assembled loops
Herkules 2E
Helios 2T

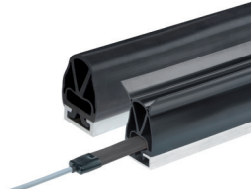
ProLoop2 DIN rail
ProLoop2 for 11-pin plug-in base

For one loop
For two loops

Detectors for industrial doors and gates

ClickLine/ StandardLine

Electrical safety edge system



With click-fit foot or recessed mounting

S-Line

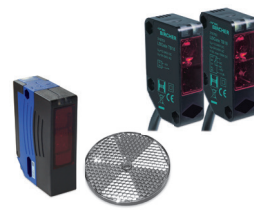
Electrical miniature safety edge system



Available with or without sealing lips

LBGate

Thru-beam and reflection light barrier



For the detection of people and vehicles



Application				
Example from the field				
Product benefits	<ul style="list-style-type: none"> In accordance with EN ISO 13856-2 and EN 12978 	<ul style="list-style-type: none"> In accordance with EN ISO 13856-2 and EN 12978 	<ul style="list-style-type: none"> Reliable protection in a range of up to 30 m 	
Supplementary products	Switching devices Aluminium mounting profiles ExpertSystem XRF EasyLoop	Switching devices ExpertSystem XRF EasyLoop	Herkules 2E, Helios 2T ExpertSystem XL ClickLine, StandardLine ExpertSystem XRF	
Variants	Rubber profiles for the public transport sector or for pinching and shearing points on machines and systems	Rubber profiles for the public transport sector or for pinching and shearing points on machines and systems	LBGate R18 LBGate TB18 LBGate R25 LBGate R25.D	

Detectors for pedestrian doors

DualSense D

Motion and presence detector



For activation and protection of primary closing edges

DualSense S

Active infrared presence detector



For protection of secondary closing edges

FutureSense

Multidimensional FMCW radar sensor



For smart opening of swing doors and revolving doors

PrimeMotion

Microwave motion detector



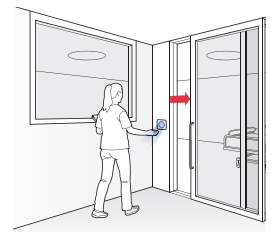
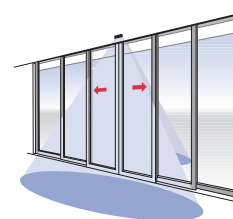
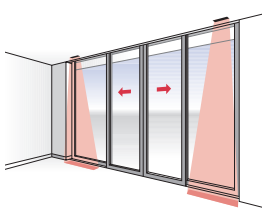
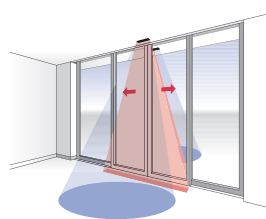
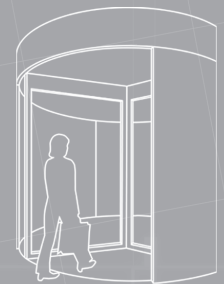
For activation of sliding doors, swing doors and revolving doors

CleanSwitch

Contact-free switch



For hygienic activation and convenient locking



- Activation and protection of escape and rescue routes, protection of secondary closing edges

- Protection of secondary closing edges

- Smart sensor with human behavior detection ensures efficient, reliable door operation

- B: An activation sensor that can be used flexibly
- C: Simple activation sensor for automatic doors

- Attractive design
- Compatible with standard flush-mounted boxes
- Seamless integration into switch systems

DualSense S
PrimeMotion
ArtMotion 2
Ceiling installation set IP65 (water-jet proof)

DualSense S
ArtMotion 2

SolidSense
TopScan
UniScan

DualSense S
DualSense S
TopScan
UniScan

TopScan
UniScan
DualSense S
Merkur 2

PrimeMotion B
PrimeMotion C
ArtMotion 2

CleanSwitch, CleanSwitch Lock
CleanSwitch Basic
CleanSwitch Integration for:
Hager, Feller, Gira, Jung

Detectors for pedestrian doors

Merkur 2

Microwave motion detector



Universally applicable with especially homogeneous field characteristics

SolidSense

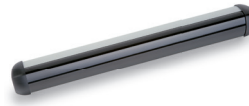
Solid-state scanner with time-of-flight technology



For swing doors with reliable edge protection

UniScan/TopScan

Active infrared presence detector



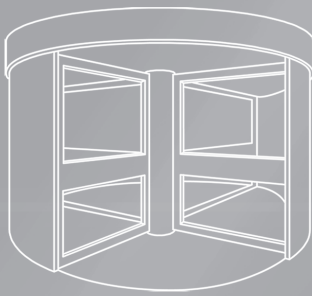
Travelling on the door panel with extremely dense area protection/point protection

SpotScan

Active infrared presence detector



With variable applications



Application				
Example from the field				
Product benefits	<ul style="list-style-type: none"> • Slow motion detection • Cross-traffic masking • Direction recognition 	<ul style="list-style-type: none"> • In acc. with EN 16005 • Easy installation • Optimal protection of secondary closing edge 	<ul style="list-style-type: none"> • In acc. DIN 18650/EN 16005 • Easy installation • Safety function irrespective of the background 	<ul style="list-style-type: none"> • Presence detector for protecting various danger points
Supplementary products	DualSense S SolidSense, TopScan, UniScan PrimeMotion ArtMotion 2	FutureSense PrimeMotion ArtMotion 2	Merkur 2 PIR 20, PIR 30 PrimeMotion ArtMotion 2	PrimeMotion PIR 20, PIR 30 TopScan ArtMotion 2
Variants	Merkur 2 ES Merkur 2 ES.C			

Other applications

PIR 20 / PIR 30

Passive infrared motion detector



For people flow, small and easy to integrate

LBDoor

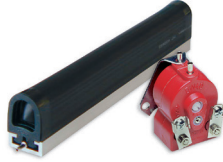
Light barrier



for automatic doors, escalators and industrial doors

DW

Pressure wave switches and safety edges



Available in an extremely wide range of versions

ESD3, EsMatix 3

Switching devices



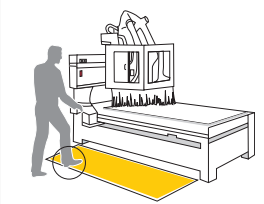
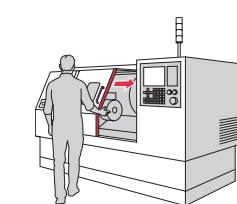
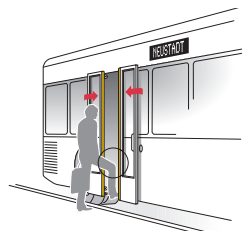
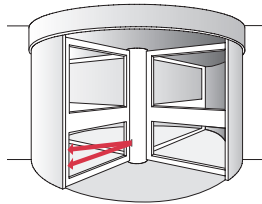
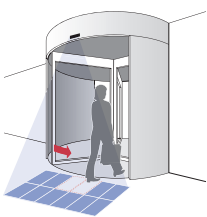
For protecting hazardous areas on machinery and plant

Safety mats

Pressure-sensitive safety mats



High variability in size, shape, colour, number of zones and electrical wiring



- Precise and highly varied detection areas

- Watertight housing IP67
- Insensitive to extraneous light
- Mountable in pairs

- Proven safety for doors and industrial doors

- Short response time
- EDM – external device monitoring
- Program/diagnostic display

- In accordance with EN ISO 13856-1
- Any switching function

UniScan
TopScan

PrimeMotion
ArtMotion 2
Merkur 2
PIR 20, PIR 30

ExpertSystem XL
ClickLine, StandardLine
S-Line
Safety mats

Switching devices
Edge ramp

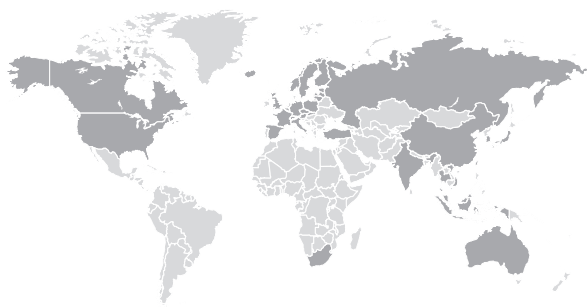
LBDoor TB12.D.N
LBDoor TB12.N
LBDoor TB12.D.P
LBDoor TB12.P

D1 series: DW40
D3 series: D3-P, D3-PB

EsMatix 3
ESD3

ESM-52/54
ESM-57
EMP, ES-Button
CareMat

Worldwide near you



Competent partners for our products are located in a large number of countries. Our specialists and authorized partners are very happy to offer personal advice and develop individual solutions with you.

An international contact overview can be found on our website at bircher.com

Is there no local contact for your application? The specialists at our head office will be happy to advise you:

BBC Bircher Smart Access

Wiesengasse 20
8222 Beringen
Switzerland
Phone +41 52 687 11 11
info@bircher.com
bircher.com